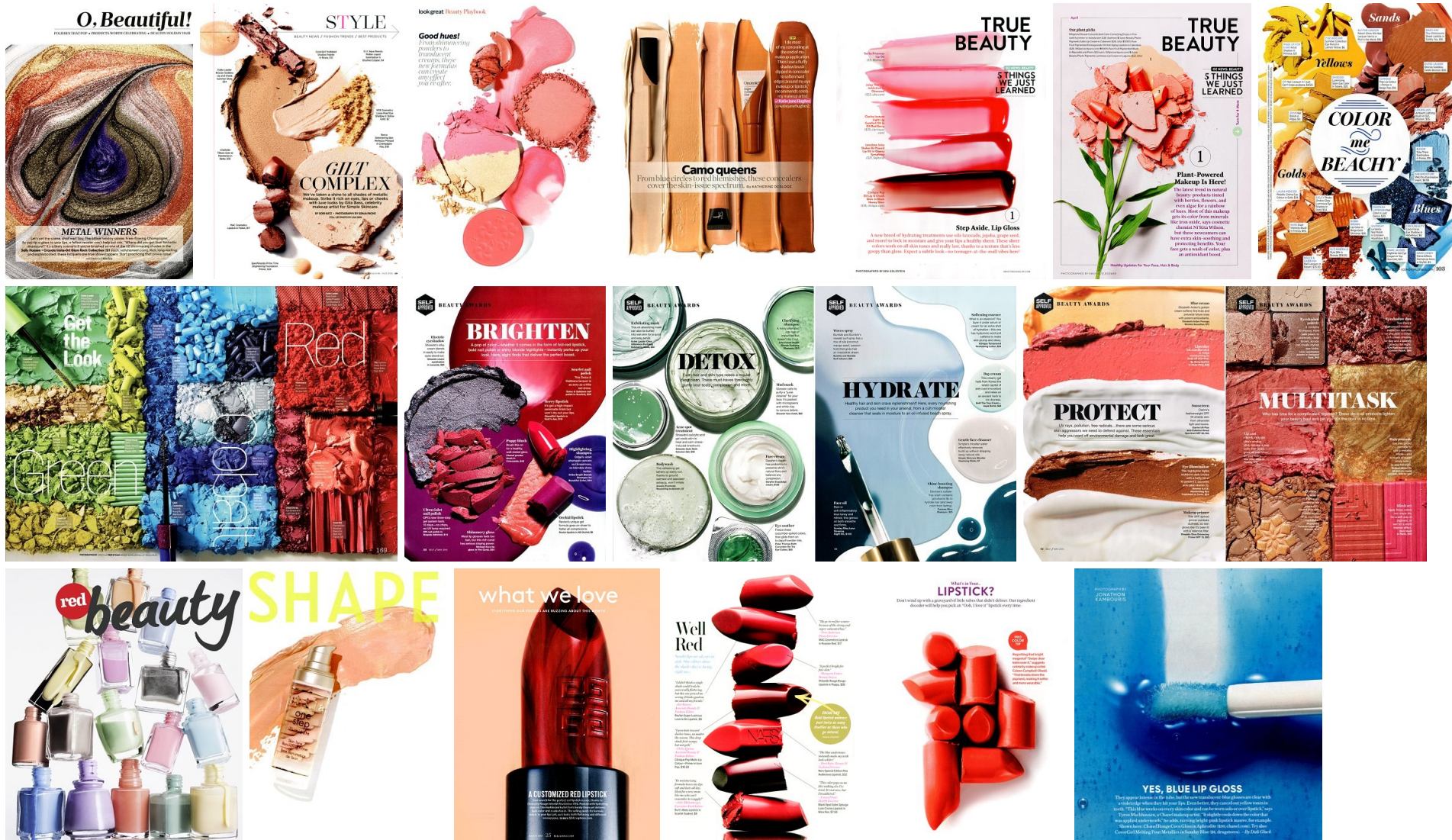
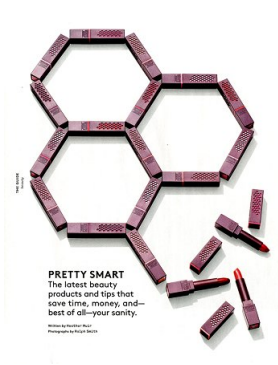
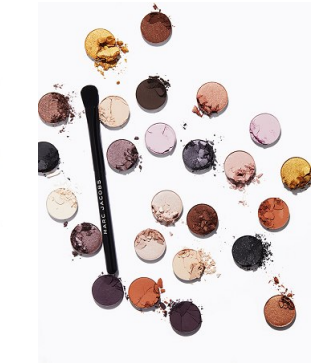


WENDY SCHELAH / COSMETICS







Rich and color-drenched—your **lips** have never looked or felt better.



For a dewy flush, treat **cheeks** to one of these emollient formulas.



☆
pro tip
TO MAKE COLOR
LAST ALL DAY,
BLEND AN EYE
PRIMER ONTO LIDS,
THEN LAYER
SHADOW ON TOP.

Bring winter-weary **eyes** back to life with lush shadows that moisturize.