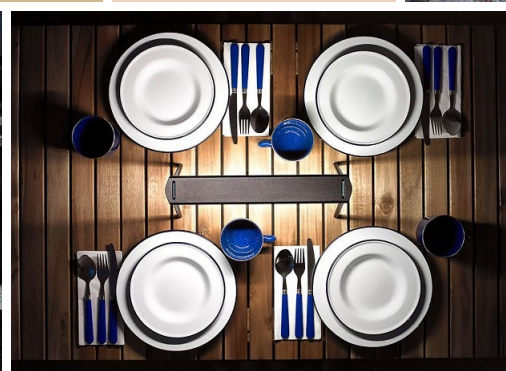
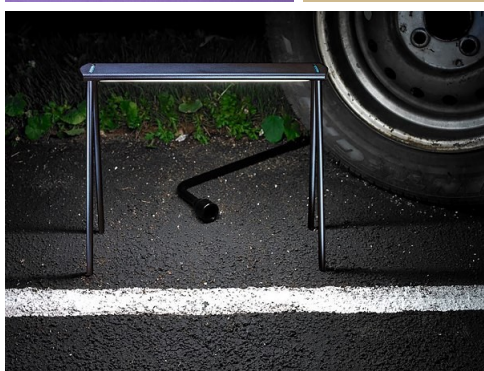
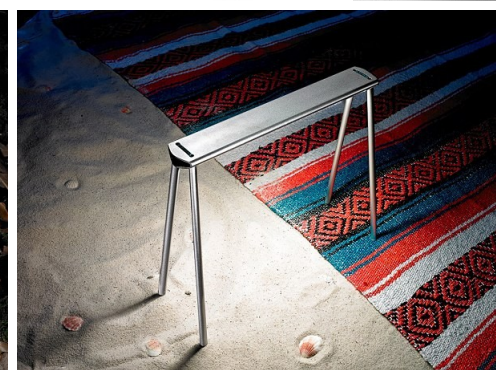
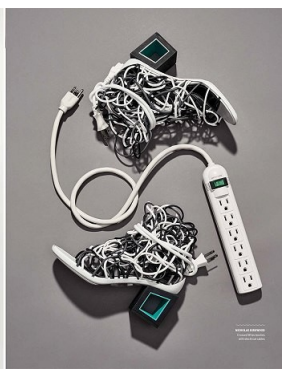
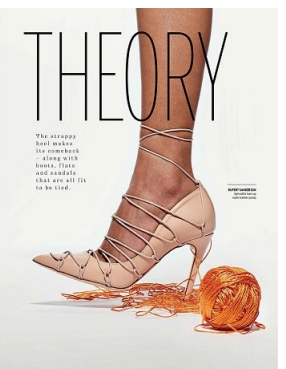


## MICHELLE LONGO / STILL LIFE - PRODUCT







### Tough Tickers

These rugged timepieces are built to last, with some featuring extra features like compasses, altimeters, and even GPS tracking. They're perfect for outdoor enthusiasts who need a reliable timepiece that can withstand the elements.



## PASSIONS

### THE POST WITH THE MOST

For a watch lover, there's nothing more precious than a timepiece. But for a collector, the watch is also a piece of art. The watch is a piece of art, and the collector is the artist. The watch is a piece of art, and the collector is the artist. The watch is a piece of art, and the collector is the artist.



### FOR THE FORTUNE TELLER

Fortune tellers and astrologers have been using crystals for centuries to help them see the future. Crystals are believed to have powerful energies that can be used to heal, protect, and enhance one's life. Crystals are believed to have powerful energies that can be used to heal, protect, and enhance one's life.



### FOR THE SMOKE MAGI DEVICE

Smoke is a powerful force, and it has been used for centuries to create magic. Smoke is a powerful force, and it has been used for centuries to create magic. Smoke is a powerful force, and it has been used for centuries to create magic.



### FOR THE STYCHER MAGNET

Styler magnets are a new type of magnet that can be used to create a variety of different effects. Styler magnets are a new type of magnet that can be used to create a variety of different effects. Styler magnets are a new type of magnet that can be used to create a variety of different effects.



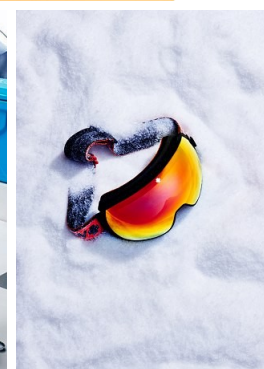
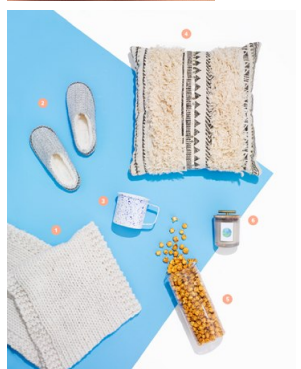
### FOR THE READY THUNDER

Thunder is a powerful force, and it has been used for centuries to create magic. Thunder is a powerful force, and it has been used for centuries to create magic. Thunder is a powerful force, and it has been used for centuries to create magic.



### FOR THE STYCHER MAGNET

Styler magnets are a new type of magnet that can be used to create a variety of different effects. Styler magnets are a new type of magnet that can be used to create a variety of different effects. Styler magnets are a new type of magnet that can be used to create a variety of different effects.



## Manual

### Only You Can Lift This Hammer

By [Author Name]



## Now

### 7 WAYS TO MAKE YOUR PARTY

By [Author Name]



### HOW TO BE A YOUTUBE STAR

(featuring MKBHD)

By [Author Name]



## Now

### PACKING YOUR TRAVEL KIT

By [Author Name]



## Now

### KEEP CALM AND CARRY ON

By [Author Name]



## WHAT'S IN MY BAG?

Coming clean! "My purse is very messy right now," admits Jenna Elfman



## WHAT'S IN MY BAG?

Smooth! Molly Ringwald carries AlkimMe rose oil to keep her skin dewy



## WHAT'S IN MY BAG?

Travel alert! Lisa Rinna won't leave home without her Magic Move pomade



## WHAT'S IN MY BAG?

"My kids love playing with Mama's purse," actress Sonya Walger tells us



## WHAT'S IN MY BAG?

"I don't use purses. I have a Star Wars backpack!" says Paris Jackson